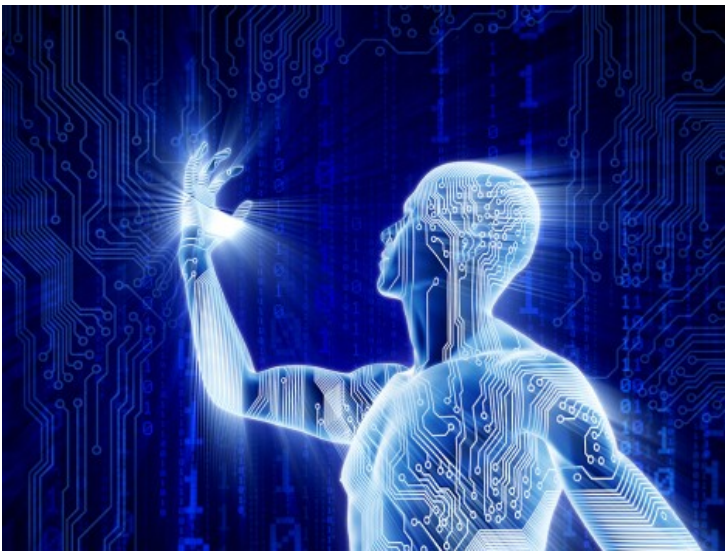


Mining the Humanities: Technologies and Applications



The nature of **humanistic data** can be multimodal, semantically heterogeneous, dynamic, time and space-dependent, and highly complicated. Translating **humanistic information**, e.g., behaviour, state of mind, artistic creation, linguistic utterance, learning and genomic information into numerical or categorical low-level data is a significant challenge on its own. New techniques, appropriate to deal with this type of data, need to be proposed and existing ones adapted to its special characteristics. The purpose of this special issue is to bring together interdisciplinary approaches that focus on the application of innovative as well as existing data matching, fusion and mining and knowledge discovery and management techniques (like decision rules, decision trees, association rules, ontologies and alignments, clustering, filtering, learning, classifier systems, neural networks, support vector machines, pre-processing, post processing, feature selection, visualization techniques) to data derived from all areas of Humanistic Sciences, e.g., linguistic, historical, behavioural, psychological, artistic, musical, educational, social, etc.. Research in this area is important to combine the fields of **semantics** and **knowledge engineering** within artificial intelligence framework, mainly because of the overwhelming amount and different types of disseminated information. High quality contributions addressing related theoretical and practical aspects are expected.

Topics of interest include, but are not limited to the following aspects:

- Humanistic Data Collection and Interpretation
- Ubiquitous Computing and Bioinformatics
- Data pre-processing
- Feature Selection
- Supervised Learning of Humanistic Knowledge

- Clustering
- Fuzzy Modelling
- Heterogeneous Data Fusion
- Knowledge Representation and Reasoning
- Knowledge Processing and Acquisition
- Expert Systems
- Linguistic Data Mining
- Historical Research
- Educational Data Mining
- Music Information Retrieval
- Data-driven Profiling/Personalization
- User Modelling
- Behaviour Prediction
- Recommender Systems
- Web Sentiment Analysis
- Social Data Mining
- Visualization Techniques
- Integration of Data Mining Results into Real-world Applications with Humanistic Context
- Data Mining Techniques for Knowledge Discovery
- Ontology Matching and Alignment
- Virtual-World Data Mining
- Game Data Mining
- Mining Humanistic Data in the Cloud
- Speech and Audio Data Processing
- Ontologies
- Biomedical Data Mining

Submission Procedure



ELSEVIER

All manuscripts should follow the submission guidelines available at the journal's website. During the submission process, please select the **?SI: Mining the Humanities?** as article type. Prospective authors are encouraged to indicate their interests any time before the submission deadline. After submitting a paper, please also inform guest editors by e-mail about the specific paper ID assigned by the submission system. If a submission is based on a prior publication in a workshop or conference, the journal submission must involve substantial advance (a minimum of 60%) in conceptual terms as well as in exposition (e.g., more comprehensive testing/evaluation/validation or additional applications/usage).

Important Dates

Deadline for manuscript submission: **April 30, 2015**

Notification of the first review: **June 30, 2015**

Revised paper submission: **July 31, 2015**

Notification of acceptance: **September 15, 2015**

Final accepted manuscript due: **October 15, 2015**

Estimated publication date: **December 2015**

Guest Editors

Spyros Sioutas
Ionian University
sioutas@ionio.gr

Lazaros Iliadis
Democritus University of Thrace
liliadis@fmenr.duth.gr

Katia Lida Kermanidis
Ionian University
kerman@ionio.gr

Phivos Mylonas
Ionian University
fmylonas@ionio.gr

For further info visit the [journal website](#).